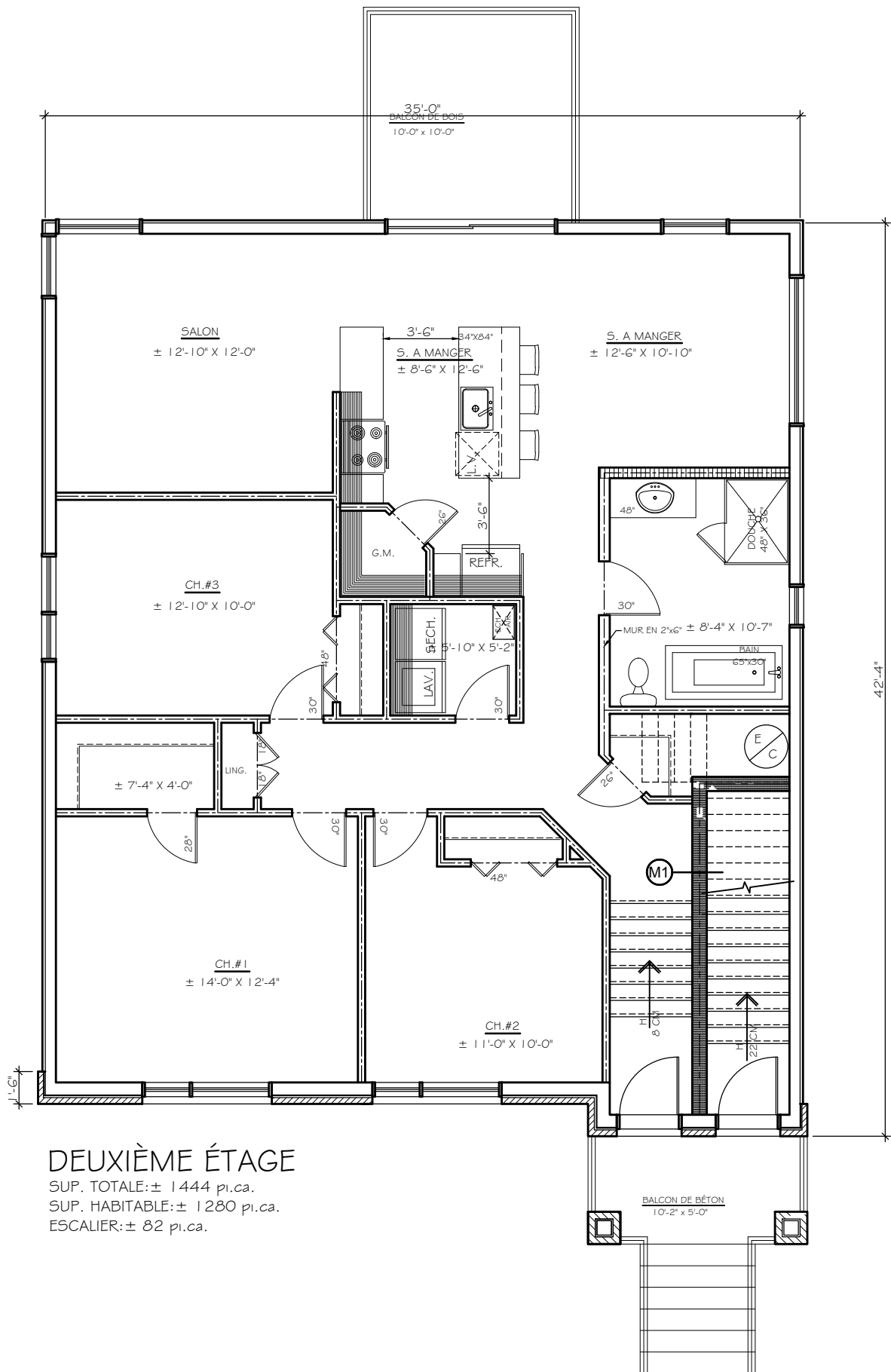


## PREMIER ÉTAGE

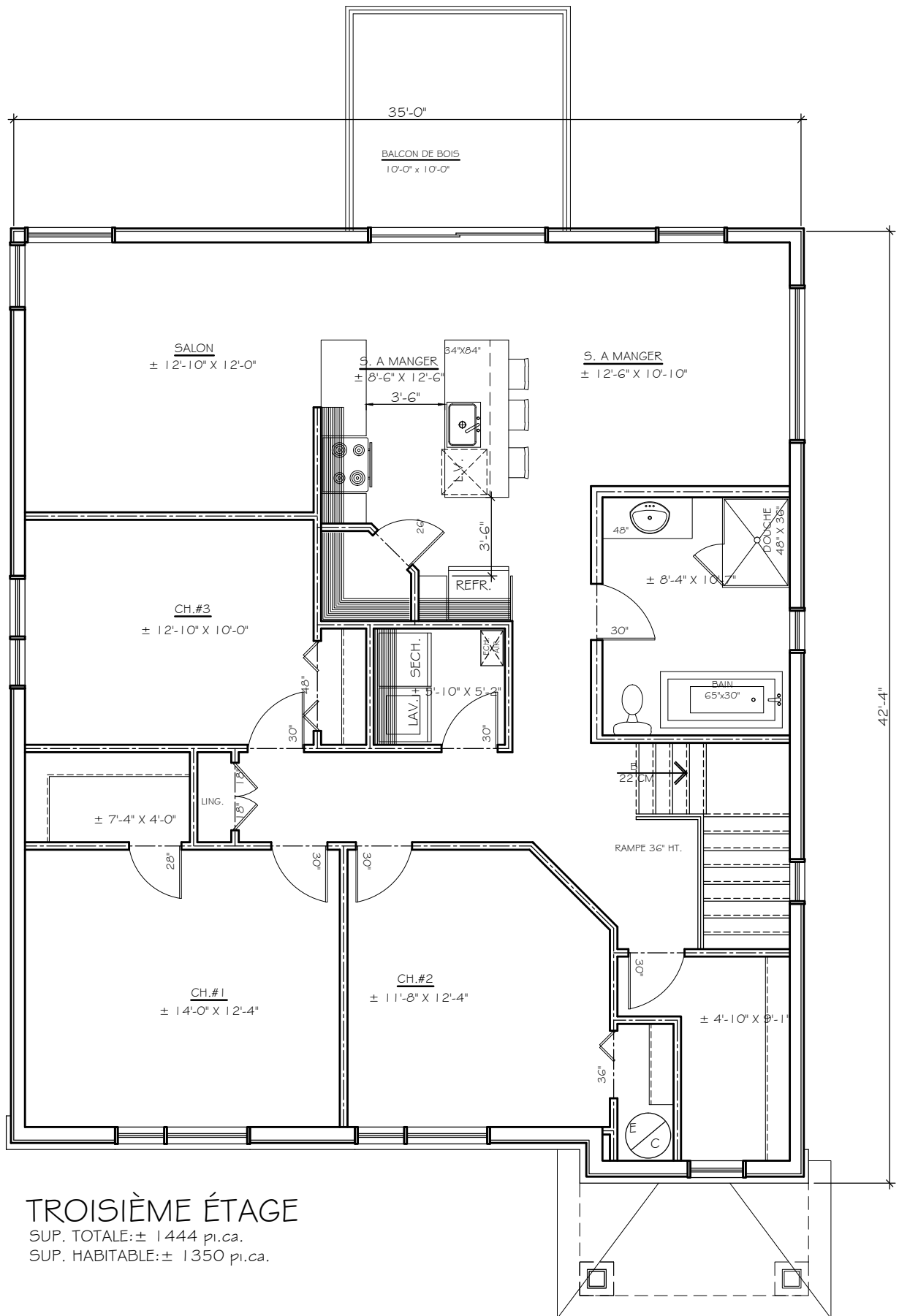
SUP. TOTALE: ± 1444 pi.ca.

SUP. HABITABLE: ± 1350 pi.ca.



## DEUXIÈME ÉTAGE

SUP. TOTALE: ± 1444 pi.ca.  
 SUP. HABITABLE: ± 1280 pi.ca.  
 ESCALIER: ± 82 pi.ca.



# TROISIÈME ÉTAGE

SUP. TOTALE: ± 1444 pi.ca.

SUP. HABITABLE: ± 1350 pi.ca.